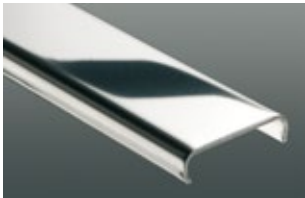
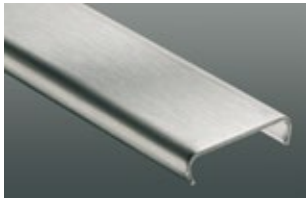


METAL SURFACES

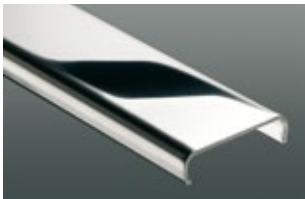
stainless steel and chrome plated brass



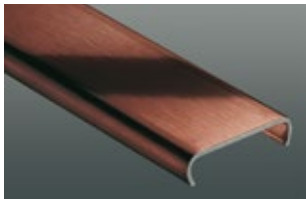
**E**  
stainless steel  
V2A = 1.4301 / AISI 304  
V4A = 1.4404 / AISI 316L



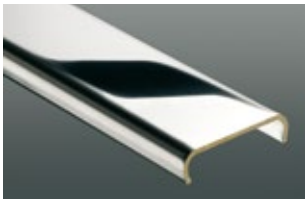
**EB**  
brushed stainless steel



**EP**  
polished stainless steel

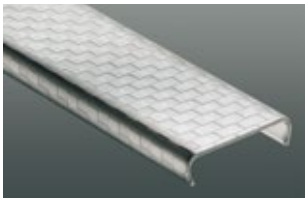


**EOB**  
aged bronze effect

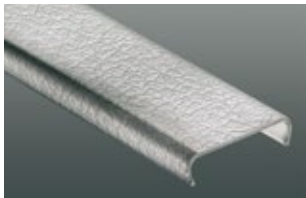


**MC**  
chrome plated brass

structured stainless steel

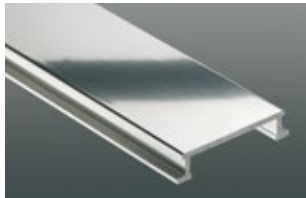


**ES 1**  
stainless steel, square check

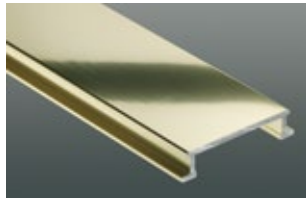


**ES 2**  
stainless steel, leather texture

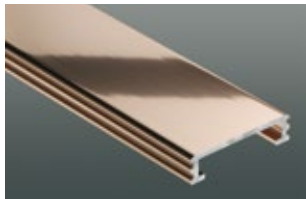
polished anodised aluminium



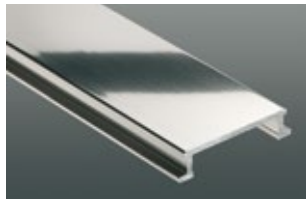
**ACG**  
polished chrome anodised aluminium



**AMG**  
polished brass anodised aluminium

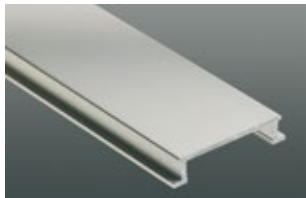


**AKG**  
polished copper/bronze anodised aluminium

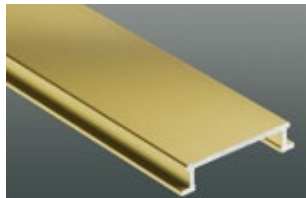


**ATG**  
polished titanium aluminium

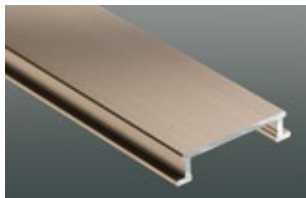
anodised aluminium



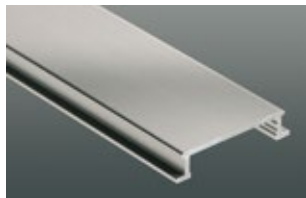
**AE**  
anodised aluminium



**AM**  
satin brass anodised aluminium



**AK**  
satin copper/bronze anodised aluminium



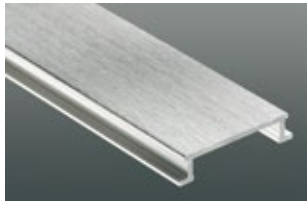
**AT**  
aluminium/titanium

**Note:** This page displays all metal finishes of Schlüter®-DESIGNLINE profiles for an improved, standardised overview. Please refer to the specific product data to verify the actual availability of individual materials. The print does not allow reproductions of the original colours.

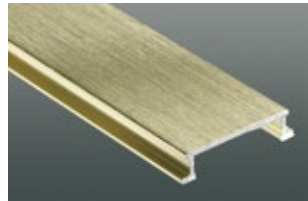


METAL SURFACES

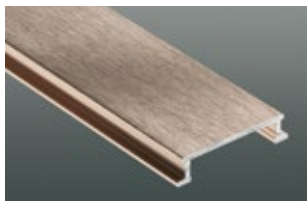
brushed anodised aluminium



**ACGB**  
brushed chrome anodised aluminium



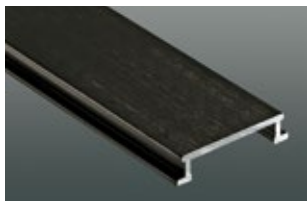
**AMGB**  
brushed brass anodised aluminium



**AKGB**  
brushed copper/bronze anodised aluminium

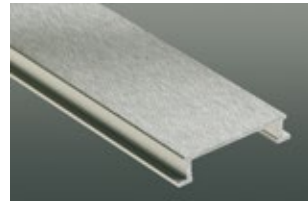


**ATGB**  
brushed titanium anodised aluminium

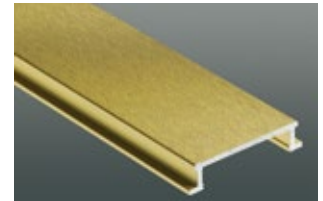


**AGSB**  
brushed graphite black aluminium

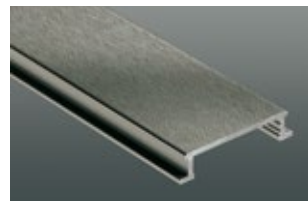
cross brushed anodised aluminium



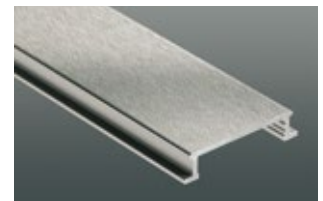
**AEX**  
cross brushed anodised aluminium natural



**AMX**  
cross brushed brass anodised aluminium

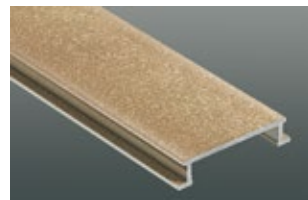


**AQGX**  
cross brushed quartz grey anodised aluminium

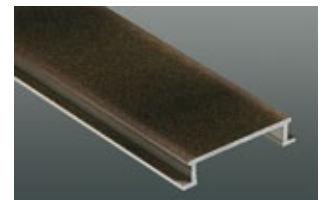


**ATX**  
cross brushed titanium anodised aluminium

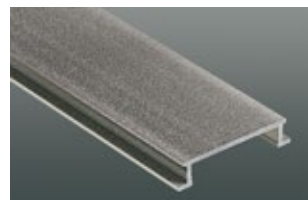
aluminium textured coating



**TSB**  
tuscan beige aluminium



**TSOB**  
tuscan bronze aluminium



**TSG**  
tuscan pewter aluminium

Schlüter®-PROFILES: additional materials

**A**  
aluminium

**K**  
copper

**P**  
coloured PVC

**AC**  
colour coated aluminium

**M**  
brass

**Z**  
zinc