

# Schlüter®-KERDI-TS

Seaming strip  
for bathtubs and showers

# 8.9

Product data sheet

## Application and function

**Schlüter®-KERDI-TS** is a seaming strip made of polyethylene with double-sided fleece fabric and a self-adhesive sound insulation strip. When properly installed, it creates a secure bond between built-in components such as bathtubs or shower trays made of steel/enamel, acrylic or mineral casting and the adjoining surfaces.

**Schlüter®-KERDI-TS-ZC** is an expansion set for waterproofing horizontal connecting surfaces. To protect the waterproofing area, the optional cutting protection **Schlüter®-KERDI-CP** can be installed as well.

Schlüter®-KERDI-TS was developed as a waterproof connection strip for panelling or coverings of tiles and pavers. It features the national technical approval (abP) required in Germany if installed in accordance with the specified installation guidelines.

## Material

Schlüter®-KERDI-TS is a polyethylene strip for bonded waterproofing with an adhesive PE foam strip on the backside.

The components of the expansion set Schlüter®-KERDI-TS-ZC are also made of PE.

The material is physiologically harmless. Cutting waste is therefore not classified as hazardous waste. Polyethylene is not UV-stable in the long term; the product should not be stored in places with prolonged exposure to direct sunlight.

Because the set contains the installation adhesive Schlüter®-KERDI-FIX, observe the shelf life of 18 months from the manufacturing date as imprinted on the box!

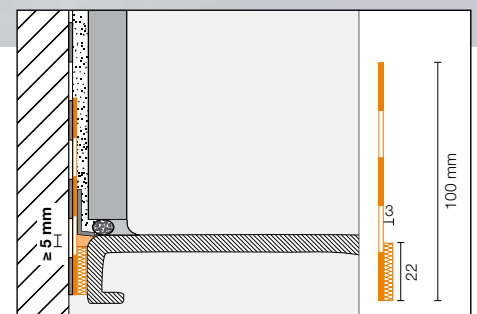


Schlüter®-KERDI-CP is made of polypropylene (PP), which is free of decay and rot-resistant.

## Material properties and areas of application:

Schlüter®-KERDI-TS is waterproof and can withstand all chemical stresses that typically occur in conjunction with ceramic tile coverings. Schlüter®-KERDI-TS is free of decay and rot-resistant and is highly elastic.

Furthermore, it is largely resistant to the effects of watery solutions of salts, acids and alkalis, many organic solvents, alcohols and oils. The suitability of the material must be verified based on the specific chemical stresses, including the





anticipated concentration, temperature and length of exposure.

Always check the substrates on which Schlüter®-KERDI-TS is to be installed to make sure they are level, stable and dry. Remove all surface components that may weaken the bond.

The application areas of Schlüter®-KERDI-TS include all substrates that must be protected against moisture and other harmful substances. Such substrates include, e.g. high-moisture areas in bathrooms and shower facilities, but also industrial spaces, e.g. in the food industry, breweries or dairies.

### Installation

A sufficient adhesive bond between the installation adhesive Schlüter®-KERDI-FIX (see product data sheet 8.3) and the tub material is required. Remove any protective foils etc. prior to installation.

1. Thoroughly clean the surface area of the built-in component with the enclosed cleaning cloth and allow it to dry for at least 2 minutes.
2. Remove the protective foil from the self-adhesive corner piece(s) and adhere it/them to the built-in component in the corner area (depending on the installation, several corner pieces may need to be installed).
3. Cut the seaming strip Schlüter®-KERDI-TS to 25mm longer than the side of the built-in component and adhere it firmly to the built-in component in a single piece. Use the marking line for a minimum installation depth of 5 mm (= upper edge of insulation strip to upper edge of tub) for guidance. Remove the protective foil of the self-adhesive sound insulation strip during the installation.  
**Note:** The seaming strip should not be cut and folded to form a corner. The expansion set KERDI-TS-ZC should be used for this purpose, as described in step 5b.
4. The building component must be in its final position, fully levelled, and professionally attached



Illustration for 1.



Illustration for 2.



Illustration for 3.



Illustration for 4.



Illustration for 5a.

5a. Fully embed Schlüter®-KERDI-TS at the adjoining surfaces, using the sealing adhesive Schlüter®-KERDI-COLL-L and a notched trowel (3 x 3 or 4 x 4 mm).

See section 5b for special solutions for connecting surfaces.

5b. The expansion set KERDI-TS-ZC should be used to create a waterproof seal around the corner and to any adjacent horizontal surface. Attach the installation corner piece included in the set (see step 2) and adhere the previously cut waterproofing collar as shown in Fig. A, B or C with KERDI-COLL-L. The fleece-free area of the collar is used for proper sealing with KERDI-FIX. The thickness of the tiles must be taken into consideration for horizontal connection surfaces.

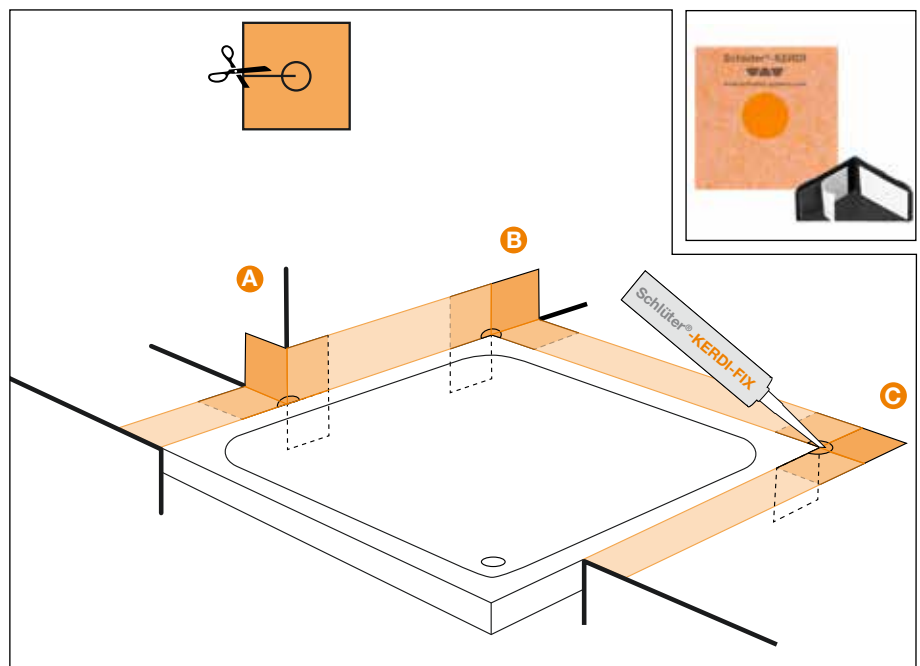


Illustration for 5b.



6. Clean the joint area with the second cleaning cloth and cover the edge surface of the built-in component with masking tape. Use the installation adhesive Schlüter®-KERDI-FIX to seal the joint up to the upper edge of the tub. Remove the masking tape.

Fresh residue of KERDI-FIX can be removed with spray oil (such as WD-40), followed by thorough degreasing of the area.



Illustration for 6.

As an option, the cutting protection strip **Schlüter®-KERDI-CP** can be embedded in the freshly installed adhesive Schlüter®-KERDI-FIX. It protects the connection seal when the silicone joint is renovated at a later time. To this end, pre-fold the previously cut plastic profile and adhere it to the adjoining wall with KERDI-FIX if applicable.



Schlüter®-KERDI-CP

As an alternative, the joint can also be covered with the maintenance-free connection profile Schlüter®-DILEX-AS.



Alternativ: Schlüter®-DILEX-AS



**Text template for tenders:**

\_\_\_\_\_ linear meters of Schlüter®-KERDI-TS as a seaming strip made of polyethylene with double-sided fleece fabric and a self-adhesive sound insulation strip, to be supplied and professionally installed in accordance with manufacturer instructions between a built-in component and rising walls. Additional accessory parts are to be...

- included in the unit prices
- invoiced separately.

Art. No.: \_\_\_\_\_  
 Material: \_\_\_\_\_ €/m  
 Labour: \_\_\_\_\_ €/m  
 Total: \_\_\_\_\_ €/m

**Product overview:**

**Schlüter®-KERDI-TS Set**

Length [m]	2,00	2,80	3,80
TS	•	•	•

The scope of delivery includes 1 90° corner piece (for 2 m connection seal) or 2 corner pieces (2.80 m and 3.80 m) as well as one cartridge of installation adhesive KERDI-FIX/ BW and two cleaning cloths.



**Schlüter®-KERDI-TS-ZC Expansion set**

Set	1 St.
PE collar	
120 x 120 mm	•
Corner piece	•



**Schlüter®-KERDI-CP Cutting protection**

Length [m]	2,00	2,80	3,80	10,00
CP	•	•	•	•



**Schlüter®-DILEX-AS**

Colours: BW- brilliant white Supplied length: 2.50 m

Colour	BW
AS	•
End caps	•
Interior corners	•

